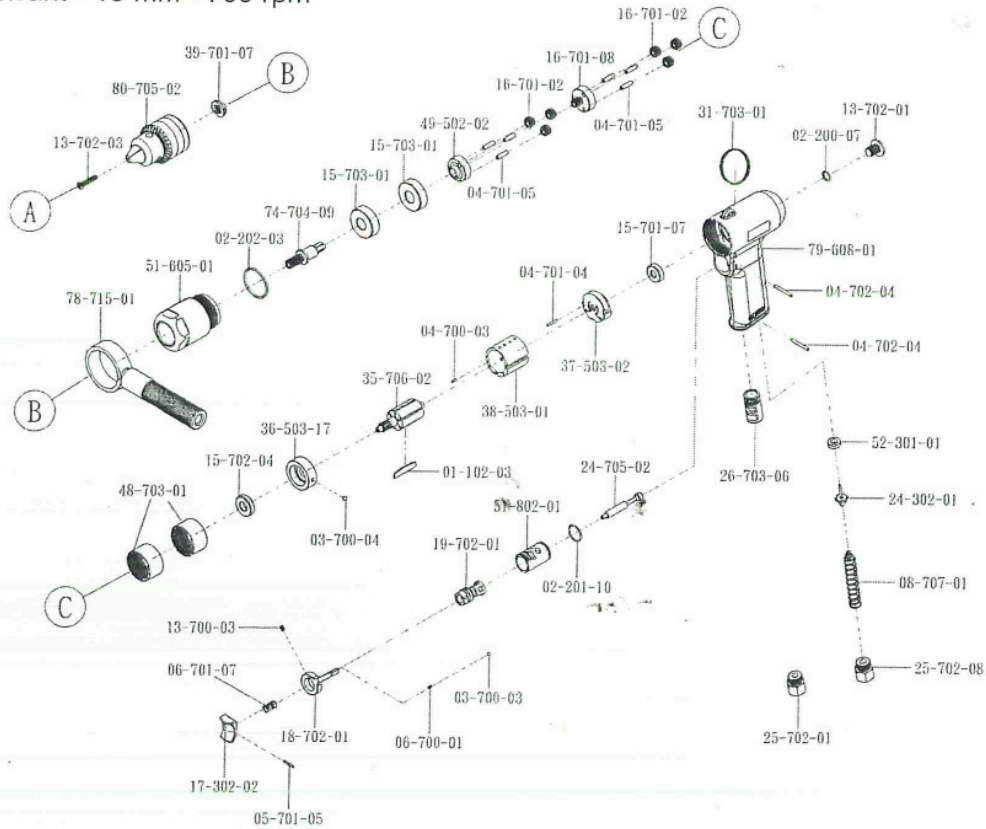


Drill reversible w. Keyless chuck - Bohrmaschine l/r umsteuerbar m. Schnellspannbohrfutter - Boormachine links/rechtsdraaiend Snelspanboorkop - Perceuse reversible autoserrant - 13 mm - 700 rpm



ITEM NO.	REF. NO.	DESCRIPTION
01-102-03	AO0001	ROTOR BLADE (6)
02-200-07	AO0002	O-RING (P8x1.5)
02-201-10	AO0003	O-RING (P15.5x1.5)
02-202-03	AO0004	O-RING (P29.87x1.8)
03-700-03	AO0005	IRON BALL (φ3.175mm)
03-700-04	AO0006	STEEL BALL (φ4mm)
04-700-03	AO0007	PIN (φ2x6)
07-701-04	AO0008	PIN (φ2x14)
04-701-05	AO0009	PIN (φ4x15) (6)
04-702-04	AO0010	PIN (φ3x24) (2)
05-701-05	AO0011	PIN (φ2x14)
06-700-01	AO0012	SPRING
06-701-07	AO0013	SPRING
08-707-01	AO0014	SPRING
13-700-03	AO0015	SCREW
13-702-01	AO0016	SCREW
13-702-03	AO0017	SCREW
15-701-07	AO0018	BALL BEARING (626)
15-702-04	AO0019	BALL BEARING (R6)
15-703-01	AO0020	BALL BEARING (6201) (2)
16-701-02	AO0021	GEAR (6)
16-701-08	AO0022	GEAR
17-302-02	AO0023	SWITCH LEVER

ITEM NO.	REF. NO.	DESCRIPTION
18-702-01	AO0024	REVERSE VALVE
19-702-01	AO0025	SPEED SWITCH
24-302-01	AO0026	VALVE ROD
24-705-02	AO0027	VALVE ROD
25-702-01	AO0028	AIR INLET (18)
25-702-08	AO0029	AIR INLET (19)
26-703-06	AO0030	MUFFLER
31-703-01	AO0031	HOOK
35-706-02	AO0032	ROTOR
36-503-17	AO0033	FRONT PLATE
37-503-02	AO0034	REAR PLATE
38-503-01	AO0035	CYLINDER
39-701-07	AO0036	BOLT
48-703-01	AO0037	GEAR RING (2)
49-502-02	AO0038	GEAR SEAT
51-605-01	AO0039	BUSHING
51-802-01	AO0040	BUSHING
52-301-01	AO0041	WASHER
74-704-09	AO0042	DRIVING ROD
78-715-01	AO0043	HANDLE
79-608-01	AO0044	HANDLE
80-705-02	AO0045	CHUCK